

Upcoming Challenge Workshops



Parent Advocacy: Bringing Parents to the Challenge

October 4th 12-1pm

What is the Challenge?

October 18th 12-1pm

Youth Advocacy: Bringing Youth to the Challenge

November 16th 12-1pm

Dates + Times	Topic	Who Should Attend?
Sept 13th, 2023 12:00-1:00 pm	How to Get a Legislative Rep to Visit Your Site! Facilitated by: Leslye Lugo, Specialist, Policy & Outreach, CAN Ben Nash, Policy Associate, Partnership for Children & Youth	Out of school time Providers
Oct 4th, 2023 12:00-1:00 pm	Bringing Parents to the Challenge Facilitated by: Silvestre Vallejo, Director of Programs, CalSAC Joanna French, Director, Statewide Strategy, Innovate	OST professionals working to engage parents in advocacy work
Oct 18th, 2023 12:00-1:00 pm	What is the "Challenge?" Facilitated by: CalSAC Staff	Out of school time Providers
Nov 16th, 2023 12:00-1:30 pm	Bringing Youth to the Challenge: Best Practices Facilitated by: Leslye Lugo, Specialist, Policy & Outreach, CAN Silvestre Vallejo, Director of Programs, CalSAC	Anyone bringing youth



Upcoming Challenge Workshops

Who wants to be a Team Leader?

November 29th 12-1pm

Advocacy vs. Lobbying (Can I attend

Challenge?) *January 15th 12-1pm*

What does the California Budget mean for me and my organization?

January 17th 10-11am

[Post Challenge] Potential Impact of the Budget Revise

May 22nd 2024 10-11am

Challenge Webinar Series

Calsac
CALIFORNIA SCHOOL-AGE CONSORTIUM
Unite. Empower. Transform.

Dates + Times	Who Wants to be a Team Leader?	Who Should Attend?
Nov 29th, 2023 12:00-1:00 pm	Facilitated by: Silvestre Vallejo, Director of Programs, CalSAC Joanna French, Director, Statewide Strategy, Innovate Malia Villareal, Senior Specialist, Policy & Outreach, CAN	Anyone interested in leading a legislative visit
Jan 15th, 2024 12:00-1:00 pm	Advocacy vs. Lobbying - Can I attend the Challenge if I can't lobby? Facilitated by: Heather Williams, Director of Policy & Outreach, CAN Jennifer I. Dietrich, Director of Policy, PCY	Out of school time Providers
Jan 17th, 2024 10:00-11:00 am	What does the "California Budget" mean for me and my organization? Facilitated by: Jennifer I. Dietrich, Director of Policy, Partnership for Children & Youth Ben Nash, Policy Associate, Partnership for Children & Youth	Out of school time Providers
May 22nd, 2024 10:00-11:00 am	Potential Impact of Budget Revise on Providers and Programs Facilitated by: Ben Nash, Policy Associate, PCY Jennifer I. Dietrich, Director of Policy, PCY	Out of school time Providers



ADVOCACY

HOW TO GET A LEGISLATOR TO VISIT YOUR PROGRAM



PRESENTERS



LESLYE LUGO

Specialist

Policy & Outreach

California AfterSchool

Network



BEN NASH

Policy Associate

Partnership for Children &

Youth



Raise your hand if...



- You are a Site Coordinator/Site Lead
- A Program Leader
- New to Expanded Learning
- Work with Elementary youth
- Work with Middle & High School youth

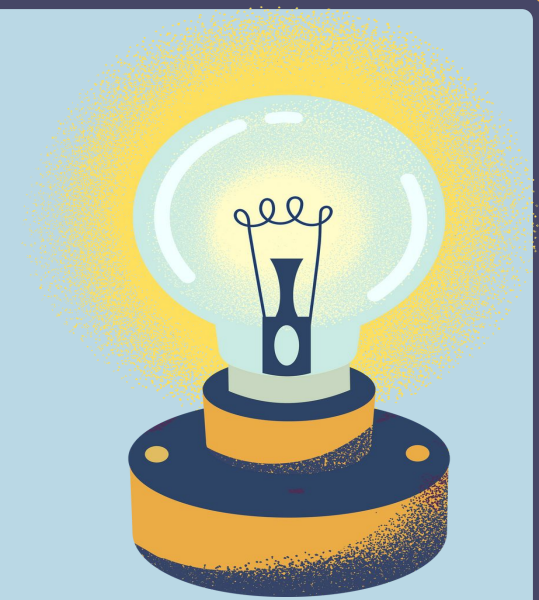


AGENDA

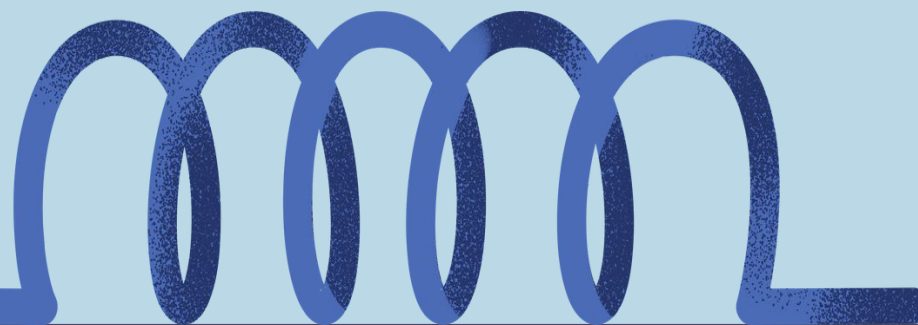


- 01 **The Value of a Site Visit**
- 02 **Who Should I Invite?**
- 03 **When Should I Invite Them?**
- 04 **Day of Tasks**
- 05 **Q&A**
- 06 **Closing**

Goals



- **Demystify hosting legislators/VIPs at your site.**
- **Find your Representatives and support you in inviting them to your programs this year.**



Why Have a Site Visit?



The Power of A Site Visit

Gain Visibility

Building awareness and understanding of OST programs is crucial. Many legislators, both experienced and new ones need to learn more about OST programs. The vast majority do not know how our programs function or what they even look like on a day to day basis. This hinders their ability to advocate for our field.

Advocacy

Being able to engage our legislators and build relationships with them is a learning experience for everyone and can have a lasting impact. Legislators write legislation that impact our programs. A site visit can translate into stronger support during budget discussions and policy decisions.

Community Engagement

When a legislator comes to visit your programs this is an opportunity for them to engage with their constituents—that's you and your community! You and your families get to share the impact OST programs make on all your lives.



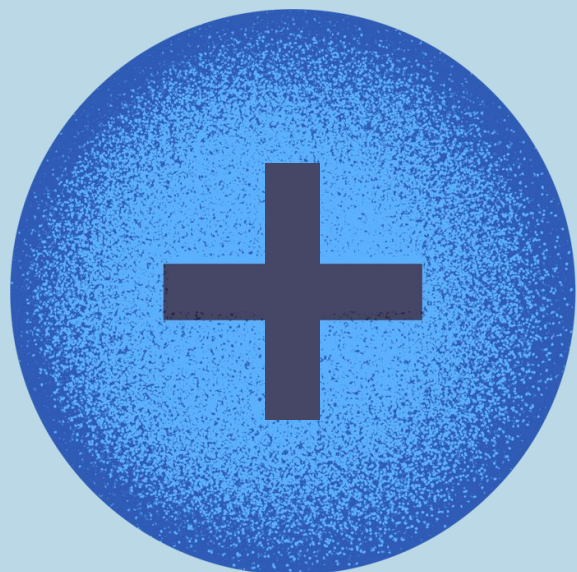
Who Should I Invite?

Build Support For Your Program by Inviting Local Representatives

Members of Congress, State

Senators, and State Assembly

Members are all fantastic options



Use Your Site Visit to Build Relationships

State representatives control most of the expanded learning funds in CA. Show them how valuable your program is in your community.

If the elected official is unavailable, invite their staff. This goes a long way in relationship building.

Celebrate the benefits of afterschool and call for support.

Connect afterschool to current events in your community.



Who Else Should I invite?

Students and families

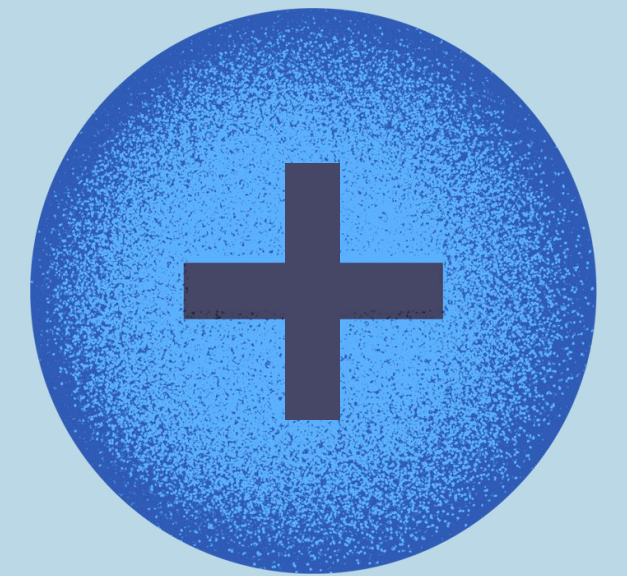
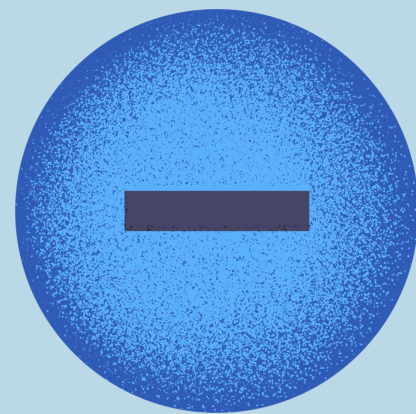
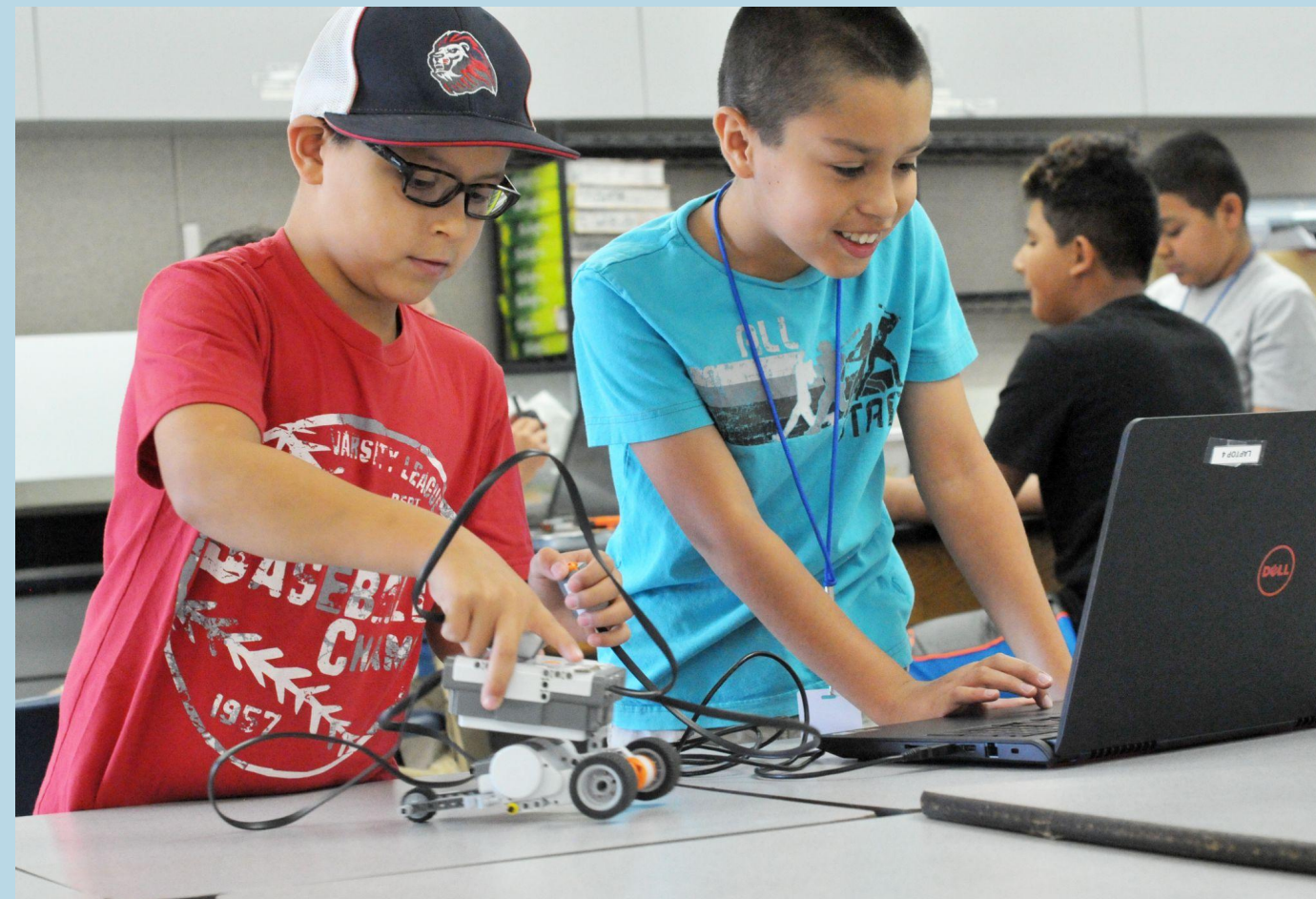
Educators and school personnel

Business and community leaders

Media

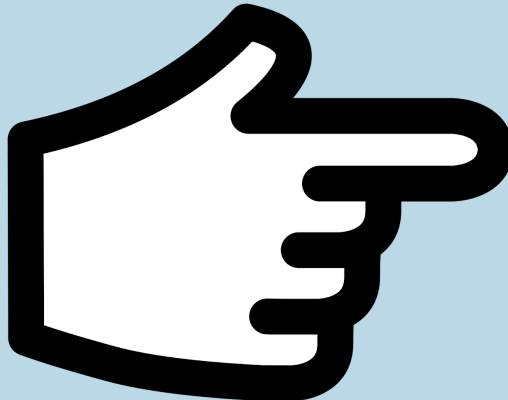
The Mayor or City Council Members

Let's Find Your Rep!



Go to Find Your Rep

Enter in the address of your program



Find Your California Representative

Enter your California address and click the locate button to find your State Senate and Assembly representatives.

* Street Address

* City

* Zip

A map of California with major cities labeled: Sacramento, San Francisco, Fresno, Los Angeles, and San Diego. The map includes a zoom-in (+) and zoom-out (-) button in the top left corner.

Legislative Bio's



Senator Brian Dahle

1st Senate District - Republican

Service Area: Butte County, Colusa County, Glenn County, Lassen County, Modoc County, portions of Nevada County (*Nevada City, Grass Valley*), Plumas County, portions of Placer County (*Colfax, parts of Auburn*), Shasta County, Sutter County, Sierra County, and Siskiyou County



Leadership

Vice-Chair, Energy, Utilities
Communications

Relevant Committees

Education
Budget and Fiscal Review
Committee

Relevant Caucuses

Member Priorities & District Issues:

- Education

Assumed Office: 2019

Previous Offices: State Assembly, 1st District, 2012-2019

Bio:

Brian Dahle represented California's First Assembly District from 2012 until 2019. Before joining the Legislature, Brian served on the Lassen County Board of Supervisors for 16 years. In the legislature, Brian works across party lines for job creation and economic development in the rural North State and

Assemblymember Megan Dahle

1st Assembly District - Republican

Service Area: Lassen, Modoc, Nevada, Plumas, Shasta, Sierra, and Siskiyou counties, and portions of Butte (*Magalia*) and Placer (*Colfax, Kings Beach, and North Auburn*) counties



Member Priorities & District Issues:

- Education: *Rural Education, Access to AP & Enrichment Classes, Frontier School Districts*

Assumed Office: 2019

Previous Statewide Offices: N/A

Bio:

Megan and her husband are dry land wheat farmers. The wheat that they grow is processed for seed, which is sold to local farmers and wholesalers alike. As a part of their business, she runs the trucking division to transport grain across the state. Their farm has full-time employees, which has given

Leadership

Vice-Chair, Education
Vice-Chair, Appropriations
Vice-Chair, Appropriations (First
Extraordinary)

Relevant Committees

Budget
Subcommittee No. 2 on Education
Finance

Relevant Caucuses



When should I reach out?

Fall/Winter Time

The legislature is usually on recess at this time so it's a great time to reach out without having any specific ask. This is a prime time to build relationships or start new ones.

Light's On

Light's On is when we celebrate all the work that OST programs do throughout the state. It's a time we honor all of our families and students, why not ask a special guest to stop by as well?

Summer Matters

Summer Matters week is another great time to invite a legislator to your site. You're already celebrating summer programs! Invite your legislator or a city leader.



California Legislative/Budget Calendar

July	Aug	Sept	Oct	Nov	Dec
Summer Recess	Session	Recess	Recess	Recess	Recess
Summer Recess July 14 to Aug 14	Deadline for Legislature to pass bills (Aug 31)	Interim Recess Sept 14 to Jan 3	Deadline for Governor to sign or veto passed legislation (Oct 14)	Elections	
Jan	Feb	Mar	April	May	June
Session	Session	Session	Session	Session	Session
Governor Releases Budget Proposal Bill Introduction Continues Jan 1. Statutes take effect	Budget Subcommittees hold overview hearings Last day to introduce bills (mid Feb)	Budget hearings continued Policy committees review bills	Spring Recess - March 30 to April 10 Deadline for legislation to pass out of first policy committee	Governor releases updated budget proposal (May Revise) Deadline for bills to pass first fiscal committee Deadline for bills to pass out of house of origin (end of May)	State budget must be passed by the legislature by June 15 Governor must sign budget by end of month

How do I reach out?

1. Email their scheduler letting them know that you'd like to invite them to your site on a certain date.

(If you can't find their scheduler's email you can reach out to us and we can help you find this information!)

2. Make sure to follow up after contacting their scheduler.

3. Keep following up and feel free to reach out to us for support!

4. If a legislative aide can come but not your legislator, that is still a win!

Site Visit Day!



DAY-OF TASKS

HAVE GUESTS SIGN IN

Have a separate
sign-in table for
media

GREET VIPs

Welcome your special
guests

HAND OUT MATERIALS

including an agenda
and program
information



SAMPLE AGENDA

Enrichment	Visit Time	Program Runs	Location	Grades	Enrollment
Opening Presentation	9:30 - 10:15		Emerson Jr Hi 2121 Calaveras Ave Davis 95616		
Ethnic Studies Yolo	10:15-10:45	8:30 to 12:00	Emerson 2121 Calaveras Ave Davis 95616	9-12	14
Robotics	11:00-11:30	9:00 to 3:00, lunch at 11:45 am	Birch Lane 1600 Birch Lane Davis 95616	4-8	30 (0 paid by us)
Summer Art Camp	11:45-12:30	9:00 to 3:00, Lunch at 12:00-1:00	Community Park/Davis Arts - 1919 F St, Davis 95616	3-5	20

More Day-of Tips

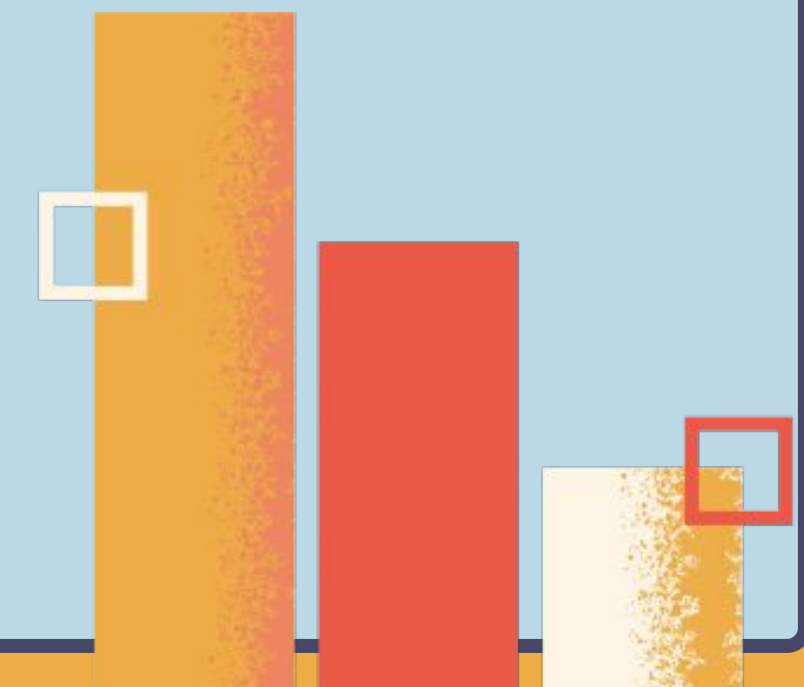
Review talking points Have program data and highlights available.

Provide bottles of water Especially if it's warm.

Signage Reserve parking spaces if possible. Put up walking signs to help your guests find their way.

Celebrate your staff! A site visit is a lot of work. Be proud of yourself and your staff!

Utilize Afterschool Alliance Register and plan your event on their website: afterschoolalliance.org/loa



Q&A

Any questions?



Upcoming Challenge Workshops

Parent Advocacy: Bringing Parents to the Challenge

October 4th 12-1pm

What is the Challenge?

October 18th 12-1pm

Youth Advocacy: Bringing Youth to the Challenge

November 16th 12-1pm



Dates + Times	Topic	Who Should Attend?
Sept 13th, 2023 12:00-1:00 pm	How to Get a Legislative Rep to Visit Your Site! Facilitated by: Leslye Lugo, Specialist, Policy & Outreach, CAN Ben Nash, Policy Associate, Partnership for Children & Youth	Out of school time Providers
Oct 4th, 2023 12:00-1:00 pm	Bringing Parents to the Challenge Facilitated by: Silvestre Vallejo, Director of Programs, CalSAC Joanna French, Director, Statewide Strategy, Innovate	OST professionals working to engage parents in advocacy work
Oct 18th, 2023 12:00-1:00 pm	What is the "Challenge?" Facilitated by: CalSAC Staff	Out of school time Providers
Nov 16th, 2023 12:00-1:30 pm	Bringing Youth to the Challenge: Best Practices Facilitated by: Leslye Lugo, Specialist, Policy & Outreach, CAN Silvestre Vallejo, Director of Programs, CalSAC	Anyone bringing youth



Upcoming Challenge Workshops

Who wants to be a Team Leader?

November 29th 12-1pm

Advocacy vs. Lobbying (Can I attend Challenge?)

January 15th 12-1pm

What does the California Budget mean for me and my organization?

January 17th 10-11am

[Post Challenge] Potential Impact of the Budget Revise

May 22nd 2024 10-11am



The infographic is titled "Challenge Webinar Series" and features the California State Capitol dome at the top center. To the right is the Calsac logo with the tagline "Unite. Empower. Transform." Below the title, there are four rows of information, each with a date and time on the left, a central topic and facilitator list, and a "Who Should Attend?" column on the right.

Dates + Times	Topic	Facilitated by:	Who Should Attend?
Nov 29th, 2023 12:00-1:00 pm	Who Wants to be a Team Leader?	Silvestre Vallejo, Director of Programs, CalSAC Joanna French, Director, Statewide Strategy, Innovate Malia Villareal, Senior Specialist, Policy & Outreach, CAN	Anyone interested in leading a legislative visit
Jan 15th, 2024 12:00-1:00 pm	Advocacy vs. Lobbying - Can I attend the Challenge if I can't lobby?	Heather Williams, Director of Policy & Outreach, CAN Jennifer I. Dietrich, Director of Policy, PCY	Out of school time Providers
Jan 17th, 2024 10:00-11:00 am	What does the "California Budget" mean for me and my organization?	Jennifer I. Dietrich, Director of Policy, Partnership for Children & Youth Ben Nash, Policy Associate, Partnership for Children & Youth	Out of school time Providers
May 22nd, 2024 10:00-11:00 am	Potential Impact of Budget Revise on Providers and Programs	Ben Nash, Policy Associate, PCY Jennifer I. Dietrich, Director of Policy, PCY	Out of school time Providers



Closing



**What are you taking
away from today?**

THANK YOU

LESLYE LUGO

llugo@afterschoolnetwork.org

CAN WEBSITE

www.afterschoolnetwork.org

BEN NASH

ben@partnerforchildren.org

PCY WEBSITE

www.partnerforchildren.org

